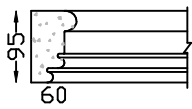
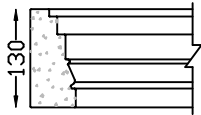


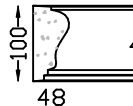
VENEER MOULDINGS Continued



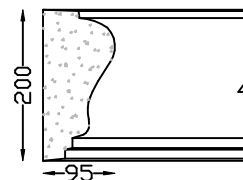
DIAGONAL ST MK2 VENEER
Length 1,200m



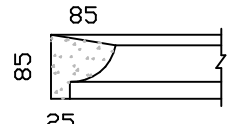
DIAGONAL ST MK1 VENEER
Length 1,500m



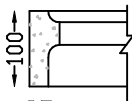
HORATIO 100 VENEER
Length 1,200m



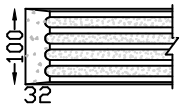
HORATIO 200 VENEER
Length 1,000m



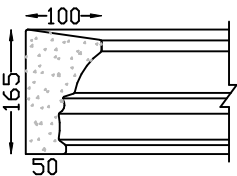
PC-7 VENEER
Length 1,500m



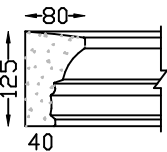
WYNBERG VENEER
Length 1,200m



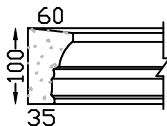
REEDED VENEER
Length 1,500m



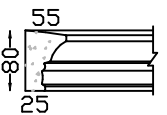
PARIS 160 VENEER
Length 1,5m



PARIS 125 VENEER
Length 1,5m



PARIS 100 VENEER
Length 1,2m



PARIS 80 VENEER
length 1m

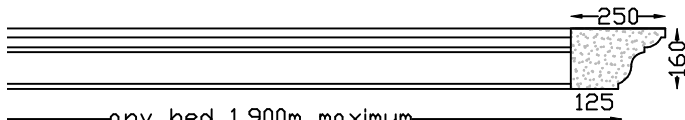
VENEER MOULDINGS (See also MOULDINGS)

Sold in lengths as specified below.
Fixing Details available.

APEX VENEER	1,000m	196.00	225.40
APEX VENEER FAIR END/CORNER		176.00	202.40
ARCHITRAVE VENEER	1,200m	217.00	249.55
ARCHITRAVE VENEER FAIR END/CORNER		176.00	202.40
BULLNOSED VENEER	1,500m	334.00	384.10
BULLNOSED VENEER FAIR END/CORNER		183.00	210.45
DIAGONAL ST. DENTIL VENEER	1,000m	230.00	264.50
DIAGONAL ST. DENTIL CORNER External		121.00	139.15
DIAGONAL STREET MKI VENEER	1,500m	220.00	253.00
DIAGONAL STREET MKI CORNER		142.00	163.30
DIAGONAL STREET MK2 VENEER	1,200m	163.00	187.45
DIAGONAL STREET MK2 FAIR END/CORNER		141.00	162.15
FASCIA VENEER	1,000m	210.00	241.50
FASCIA CORNER External		121.00	139.15
HAMPTON 120 VENEER	1,200m	222.00	255.30
HORATIO 100 VENEER	1,200m	162.00	186.30
HORATIO 100 CORNER In Elevation		106.00	121.90
HORATIO 100 FAIR END/CORNER		106.00	121.90
HORATIO 200 VENEER	1,000m	202.00	232.30
HORATIO 200 FAIR END/CORNER In Elevation		142.00	163.30
MAWOL VENEER	1,200m	129.00	148.35
MAWOL VENEER FAIR END/CORNER		106.00	121.90
MOWBRAY VENEER	1,500m	309.00	355.35
MOWBRAY VENEER FAIR END/CORNER		198.00	227.70
OBSERVATORY VENEER	1,200m	202.00	232.30
OBSERVATORY VENEER CORNER		147.00	169.05
PARIS 160 VENEER	1,500m	323.00	371.45
PARIS 160 FAIR END/CORNER		207.00	238.05
PARIS 125 VENEER	1,500m	254.00	292.10
PARIS 125 FAIR END/CORNER		145.00	166.75
PARIS 100 VENEER	1,200m	162.00	186.30
PARIS 100 FAIR END/CORNER		106.00	121.90
PARIS 80 VENEER	1,000m	105.00	120.75
PARIS 80 FAIR END/CORNER		83.00	95.45
PC-7 VENEER	1,500m	248.00	285.20
PC-7 VENEER FAIR END/CORNER		198.00	227.70
QUADRANT VENEER	1,200m	165.00	189.75
REEDED VENEER	1,500m	165.00	189.75
REEDED CORNER In Elevation		142.00	163.30
STEPPED VENEER	1,500m	220.00	253.00
STEPPED FAIR END/CORNER		121.00	139.15
WB VENEER	1,500m	271.00	311.65
WB VENEER FAIR END/CORNER		176.00	202.40
WYNBERG VENEER	1,200m	162.00	186.30

EACH
Excl. | Vat 15%
CT Delivery +10%

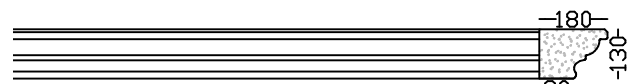
Lintels - Built In



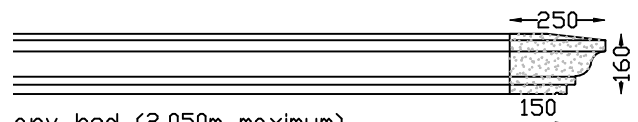
CAROUSEL LINTEL
Max Bed 1,900m
Optional 2 x lifting sockets.



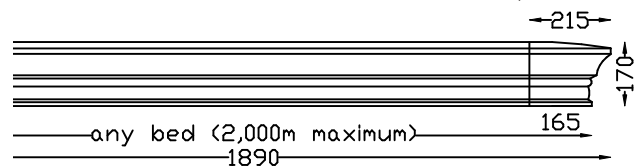
PEDIMENT LINTEL
Max 1,950m bed



any bed (2,000m maximum)
OG LINTEL
Max 2,000m bed



any bed (2,050m maximum)
WOODLANDS LINTEL
Max 2,050m bed

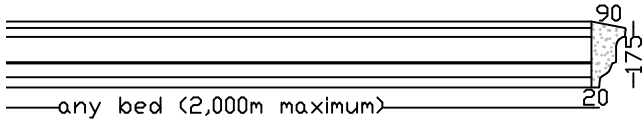


any bed (2,000m maximum)
PARIS LINTEL MK2
Max Bed 1,790m



Lintels - Veneer

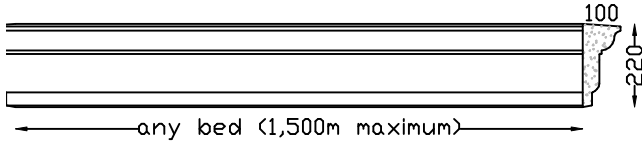
For windows greater than max bed, lintel will be in more than one piece.



any bed (2,000m maximum)

ARCHITRAVE VENEER LINTEL

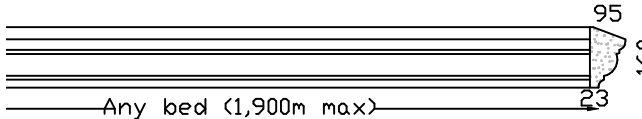
Max 2,000m bed. Larger sizes in more than one piece.



any bed (1,500m maximum)

APEX VENEER LINTEL

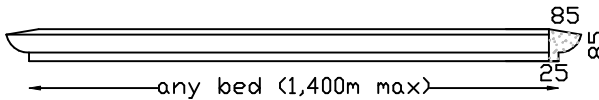
Max 1,500m bed. Larger sizes in more than one piece.



Any bed (1,900m max)

WB VENEER LINTEL

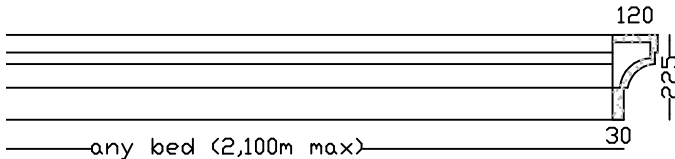
Max 1,900m bed. Larger sizes in more than one piece.



any bed (1,400m max)

PC-7 VENEER LINTEL

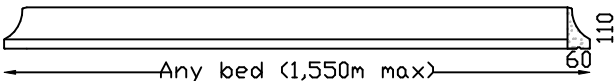
Max 1,400m bed. Larger sizes in more than one piece.



any bed (2,100m max)

CAPE ROYALE VENEER LINTEL FRC

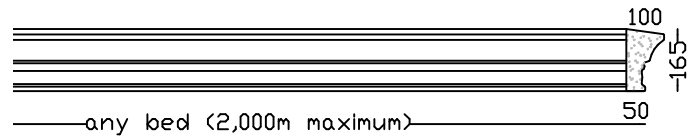
Max 2,100m bed. Larger sizes in more than one piece.



Any bed (1,550m max)

DRIP VENEER LINTEL

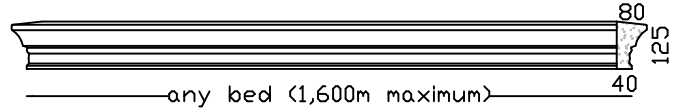
Max 1,550m bed. Larger sizes in more than one piece.



any bed (2,000m maximum)

PARIS 160 VENEER LINTEL

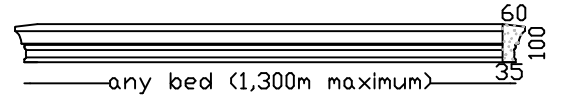
Max 2,000m bed. Larger sizes in more than one piece.



any bed (1,600m maximum)

PARIS 125 VENEER LINTEL

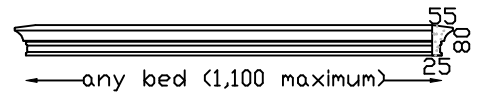
Max 1,600m bed. Larger sizes in more than one piece.



any bed (1,300m maximum)

PARIS 100 VENEER LINTEL

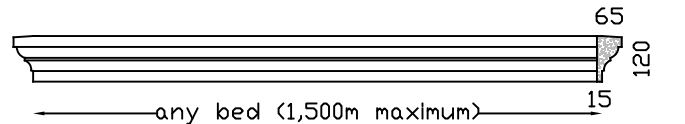
Max 1,300m bed. Larger sizes in more than one piece.



any bed (1,100 maximum)

PARIS 80 VENEER LINTEL

Max 1,100m bed. Larger sizes in more than one piece.

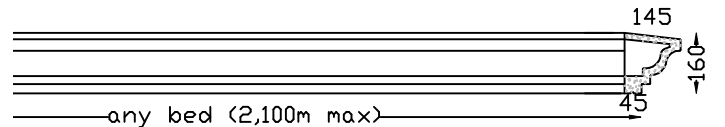


any bed (1,500m maximum)

HAMPTON 120 VENEER LINTEL

Max 1,500m bed. Larger sizes in more than one piece.

Also, **HAMPTON 210 VENEER LINTEL**
Max 1,800m bed. Larger sizes in more than one length.



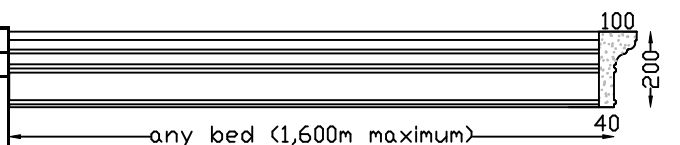
any bed (2,100m max)

WOODLANDS VENEER LINTEL FRC

Max 2,100m bed. Larger sizes in more than one piece.

LINTELS		Per meter	
		Excl.	Vat 15%
All with Left & Right Returns. Fixing details available.		CT Delivery +10%	
APEX VENEER LINTEL	Max 1,500m bed	415.00	477.25
ARCHITRAVE VENEER LINTEL	Max 2,000m bed	332.00	381.80
CAPE ROYALE VENEER LINTEL FRC	Max 2,100m bed	458.00	526.70
CAROUSEL LINTEL	Max 1,900m bed	541.00	622.15
DRIP LINTEL	Max 1,550m bed	293.00	336.95
HAMPTON 120 VENEER LINTEL	Max 1,500m bed	293.00	336.95
HAMPTON 210 VENEER LINTEL	Max 1,800m bed	415.00	477.25
HORATIO 100 VENEER LINTEL	Max 1,350m bed	193.00	221.95
O.G. LINTEL	Max 2,000m bed	496.00	570.40
PARIS 80 VENEER LINTEL	Max 1,100m bed	151.00	173.65
PARIS 100 VENEER LINTEL	Max 1,300m bed	193.00	221.95
PARIS 125 VENEER LINTEL	Max 1,600m bed	293.00	336.95
PARIS 160 VENEER LINTEL	Max 2,000m bed	350.00	402.50
PARIS LINTEL Mk2	Max 1,790m bed	496.00	570.40
PC-7 VENEER LINTEL	Max 1,400m bed	296.00	340.40
PEDIMENT LINTEL	Max 1,950m bed	523.00	601.45
PEDIMENT VENEER LINTEL	Max 1,600m bed	433.00	497.95
TUSCAN 250 VENEER LINTEL	Max 1,600m bed	458.00	526.70
WB VENEER LINTEL	Max 1,900m bed	332.00	381.80
WOODLANDS LINTEL	Max 2,050m bed	544.00	625.60
WOODLANDS VENEER LINTEL FRC	Max 2,100m bed	423.00	486.45

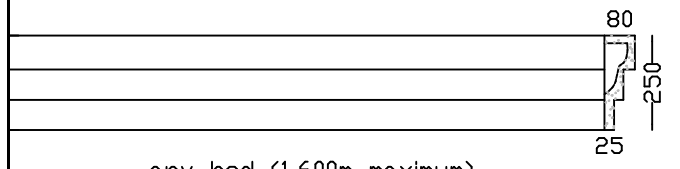
Minimum charge is for 1m (if length is less than 1m)
NB. Please order "bed" measurement (not overall).



any bed (1,600m maximum)

PEDIMENT VENEER LINTEL

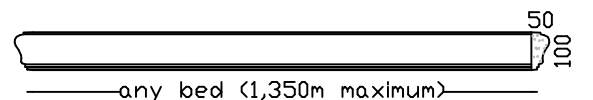
Max 1,600m bed. Larger sizes in more than one piece.



any bed (1,600m maximum)

TUSCAN 250 VENEER LINTEL

Max 1,600m bed. Larger sizes in more than one piece.



any bed (1,350m maximum)

HORATIO 100 VENEER LINTEL

Max 1,350m bed. Larger sizes in more than one piece.

